

Corvette Jack Pucks (5216374) – Quick Start Guide



DANGER! Never work with an unbalanced vehicle on a Jack. Working on an unbalanced vehicle may cause damage, severe injury, or death.

WARNING! Jack the vehicle from the manufacturer's designated Jack Points **ONLY**. Damage to the vehicle and/or severe injury may result when lifting from any other point on the vehicle.

The Manufacturer's Jacking Points are designed to prevent vehicle damage and balance the vehicle's center of gravity. **Always Jack in accordance with the vehicle owner's manual.**

Compatible Vehicles:

- Chevrolet Corvette C5
- Chevrolet Corvette C6
- Chevrolet Corvette C7
- Chevrolet Corvette C8
- Chevrolet Corvette Z06*
- Chevrolet Corvette ZR1*
 - C6 & C7 Only*

***NOT Compatible with:**
2006-2012 C6 Z06,
ZR1, or Grand Sport



! DANGER !

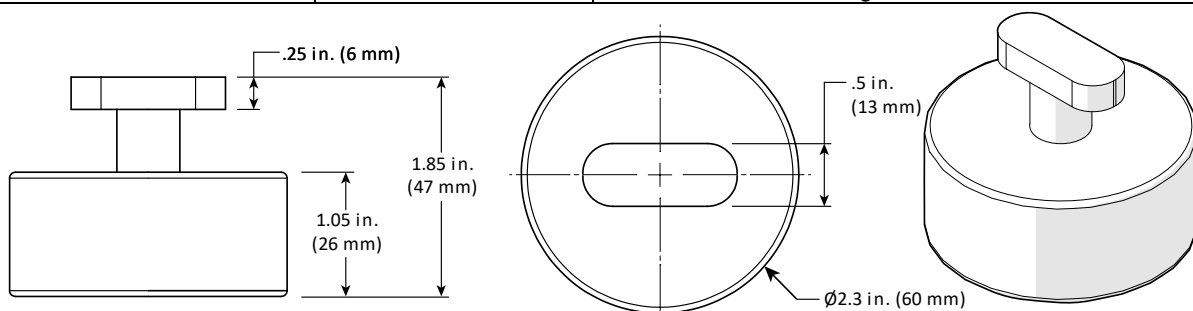
Crushing Hazard!
Always keep clear
of the Jacking area.

Using the Jack Pucks:

You are responsible for safely Jacking the vehicle.

- a) Ensure the vehicle is on level ground – Shift to park or first gear, engine is off, engage the parking brake and chock the wheels.
- b) Verify the surface under the vehicle is capable of supporting the weight of the Jack and the vehicle. Level, unbroken concrete is recommended.
- c) Ensure the area around the vehicle is clear.
- d) Do **NOT** lift a vehicle with people inside.
- e) Close the hood, trunk, and all doors.
- f) Use the correct Jack Puck for the vehicle.
- g) Install the Corvette Jack Puck (5216374) into the front or rear frame rail slots. Rotate each Jack Puck 90 degrees. Consult the vehicle owner's manual for Jacking Point locations.
- h) Center the vehicle jack under the Jack Puck and carefully raise the Jack until it just touches the Jack Puck.
- i) Ensure the Jack Puck will ride securely on the Vehicle Jack without slipping out.
- j) Slowly and carefully raise the vehicle.
- k) Never work on a vehicle that is unstable on the Jack.
- l) Carefully lower the vehicle after completing the work and move the vehicle jack out of the area.
- m) Remove the Jack Puck by rotating 90° and pulling down.

Always remove the Jack Pucks from the vehicle after use. The Jack Puck is not designed to be permanently installed in the vehicle's Jacking Points.



Specifications:

Material: Hard Rubber 90D Shore

Rated Capacity on each Jack Puck: 1,750 lbs. (794 kg) max.

Rated Vehicle Jacking Capacity: (One Jack Puck supporting each factory recommended Jack Point) 7,000 lbs. (3,175 kg) Max.

Rated Temperature Range: -40°F (-40°C) to +104°F (+40°C) max.

General Warnings and Cautions:

- **Always** refer to the vehicle owner's manual for the exact locations of the factory-recommended jacking points. Incorrect placement can result in the vehicle tilting or shifting, increasing the risk of falling off the jack.
- **Always** check Floor Jack clearance before jacking where add-on Accessory Side Skirts or Side Splitters have been installed.
- **Never** place the jack puck or the jack itself on parts of the vehicle that are not designated as jacking points. Lifting from non-recommended areas can damage components and can lead to unsafe lifting conditions.
- **Ensure** the jack puck is rated for the weight of your vehicle. Exceeding the weight capacity can cause the puck to deform or fail, potentially leading to vehicle damage and/or severe injury.
- **Verify** that the jack puck fits your vehicle's specific jacking points. An improper fit can cause the vehicle to slip off the jack, leading to vehicle damage and/or severe injury.
- **Before installing the jack puck**, visually inspect the vehicle's jacking point for any existing damage or rust. A compromised jacking point may not support the vehicle's weight safely, even if it is the factory-recommended location.
- **Regularly inspect** the jack puck for any signs of wear, cracks, or other damage. Damaged pucks can fail under load, causing the vehicle to drop unexpectedly.
- **Position** the vehicle jack directly under the Jack Puck installed in the vehicle's jacking point. Misalignment can result in unstable jacking and possible vehicle damage or severe personal injury.
- **Ensure** they are properly attached and won't slip out of place during use. Some jack pucks are designed to attach securely to the jacking point or the jack itself.
- **Use** the jack puck on a flat, stable surface. Uneven or slippery surfaces can cause the jack to tip or move unexpectedly, which can be dangerous.
- **Avoid** using the jack pucks in conditions that are too hot or too cold, as this can affect their structural integrity. Rubber and urethane materials can be sensitive to extreme temperatures.
- **Keep** the jack pucks away from harsh chemicals, oils, and solvents that can degrade the material, reducing its effectiveness and lifespan.
- **Do not attempt** to overextend the jack lifting height beyond its rated limit by using multiple stacked pucks, or other non-OEM approved adapters. This can create instability and increase the risk of vehicle damage and/or severe personal injury.

