

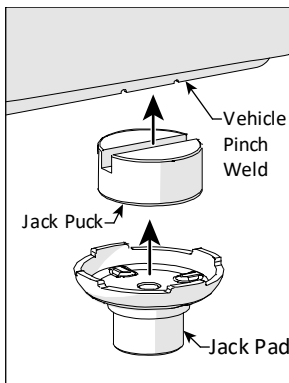
## Universal Jack Pucks (5216328)– Quick Start Guide



**DANGER!** Never work with an unbalanced vehicle on a Jack. Working on an unbalanced vehicle may cause damage, severe injury, or death.

**WARNING!** Jack the vehicle from the manufacturer's designated Jacking Points ONLY. Damage to the vehicle and/or severe injury may result when lifting from any other point on the vehicle.

The manufacturer's jacking points are designed to prevent vehicle damage and balance the vehicle's center of gravity. **Always Jack in accordance with the vehicle owner's manual.**



**⚠ DANGER ⚠**  
**Crushing Hazard!**  
**Always keep clear of the Jacking area.**

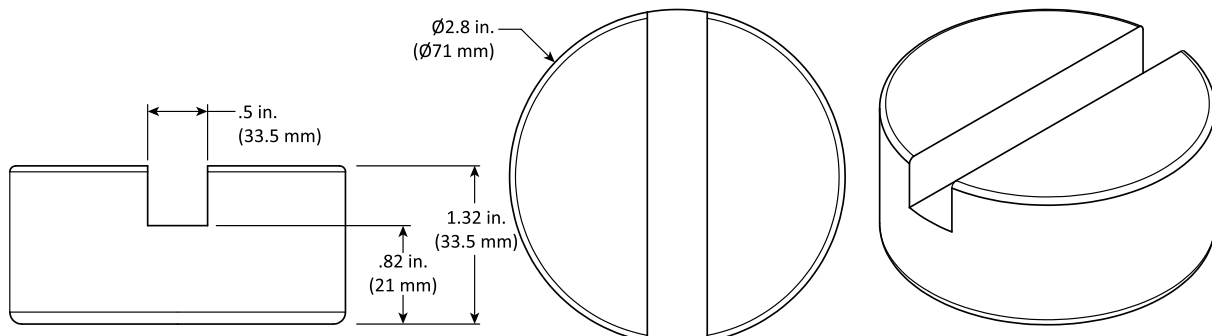
### Using the Jack Puck:

***You are responsible for safely lifting the vehicle.***

- Ensure the Vehicle is on level ground – Shift to first gear or park, engine off, chock the wheels and engage the parking brake.
- Verify the surface under the vehicle is capable of supporting the weight of the Jack and the vehicle. Level unbroken concrete is recommended.
- Ensure the area around the vehicle is clear.
- Do **NOT** lift a vehicle with people inside.
- Close the hood, trunk, and all doors.
- Use the correct Jack Puck for the vehicle.
- Place one Jack Puck on the vehicle jack pad.

### **DANGER! NEVER STACK MULTIPLE JACK PUCKS!**

- Move the vehicle jack into position directly under the vehicle's jacking point and rotate the Jack Puck until its slot aligns with the vehicle's pinch weld.
- Carefully raise the Jack until the Jack Puck just touches the pinch weld jack point. Adjust the Jack Puck or vehicle jack position, if required.
- Ensure the Jack Puck will ride securely on the jack pad without slipping out.
- Slowly and carefully raise the vehicle.
- Never work on a vehicle that is unstable on the Jack.
- Slowly and carefully lower the vehicle after completing the work.
- Remove the Jack Puck from the Jack and store.



## Specifications:

**Material:** Hard Rubber 90D Shore

**Rated Capacity on each Jack Puck:** 1,750 lbs. (794 kg) max.

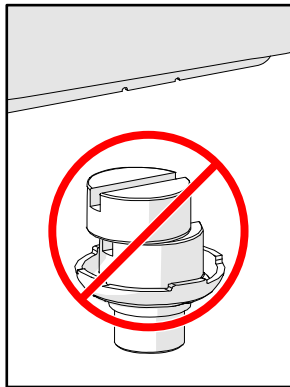
**Rated Vehicle Jacking Capacity:** (One Jack Puck supporting each factory recommended Jack Point) 7,000 lbs. (3,175 kg) Max.

**Rated Temperature Range:** -40°F (-40°C) to +104°F (+40°C) max.

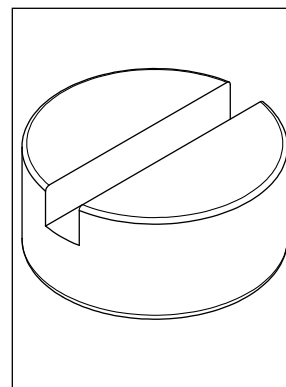
## General Warnings and Cautions:

- **Always** refer to the vehicle's owner's manual for the exact locations of the factory-recommended jacking points. Incorrect placement can result in the vehicle tilting or shifting, increasing the risk of falling off the jack.
- **Never** place the jack puck or the jack itself on parts of the vehicle that are not designated as jacking points. Lifting from non-recommended areas can damage the vehicle or components and can lead to unsafe lifting conditions.
- **Ensure** the jack puck is rated for the weight of your vehicle. Exceeding the weight capacity can cause the puck to deform or fail, potentially leading to vehicle damage and/or severe injury.
- **Verify** that the jack puck fits your vehicle's specific jacking points. An improper fit can cause the vehicle to slip off the jack, leading to vehicle damage and/or severe injury.
- **Before placing the jack puck**, visually inspect the vehicle's jacking point for any existing damage or rust. A compromised jacking point may not support the vehicle's weight safely, even if it is the factory-recommended location.
- **Regularly inspect** the jack puck for any signs of wear, cracks, or other damage. Damaged pucks can fail under load, causing the vehicle to drop unexpectedly.
- **Position** the jack puck correctly on the floor jack and the vehicle's jacking point. Misalignment can result in unstable jacking and possible vehicle damage or severe personal injury.
- **Ensure** they are properly attached and won't slip out of place during use. Some jack pucks are designed to attach securely to the jacking point or the jack itself.
- **Use** the jack puck on a flat, stable surface. Uneven or slippery surfaces can cause the jack to tip or move unexpectedly, which can be dangerous.
- **Avoid** using the jack pucks in conditions that are too hot or too cold, as this can affect their structural integrity. Rubber and urethane materials can be sensitive to extreme temperatures.
- **Keep** the jack pucks away from harsh chemicals, oils, and solvents that can degrade the material, reducing its effectiveness and lifespan.
- **Do not attempt** to overextend the jack lifting height beyond its rated limit by using multiple stacked pucks, or other non-OEM approved adapters. This can create instability and increase the risk of vehicle damage and/or severe personal injury.

### ***DANGER! NEVER STACK JACK PUCKS!***



### ***ALWAYS INSPECT FOR DAMAGE BEFORE USE!***



### ***DANGER! ALWAYS VERIFY THE JACK PUCK IS CORRECTLY SEATED IN THE JACK PAD BEFORE USE!***

