

L. M. C. VAN'S INC

TIRE REPAIR EQUIPMENT

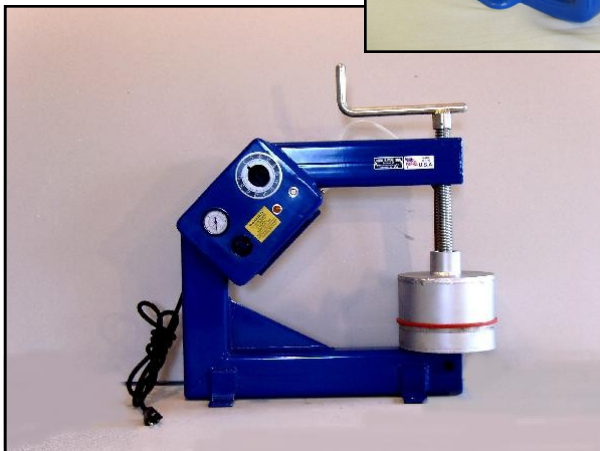
LINCOLN TIRE VULCANIZING EQUIPMENT

Dependable Tire Equipment for over 30 years

Phone: 800.221.4109 or 810.679.2115

Fax: 810.679.2681

Visit us on the web at
www.lincolnvulcanizers.com
email: lmcvans@sbcglobal.net



2014 CATALOG

TABLE OF CONTENTS

| | |
|---|---------|
| TUBE PLATE VULCANIZERS | 1 - 2 |
| PASSENGER TIRE REPAIR..... | 3 |
| TRUCK TIRE VULCANIZER..... | 4 |
| TRACTOR TIRE VULCANIZER..... | 5 |
| LARGE TRUCK-TRACTOR VULCANIZER..... | 6 - 7 |
| TRACTOR/TRUCK AIR SPOTTER..... | 8 - 9 |
| AIR OPERATED TRUCK TIRE VULCANIZER AND STAND..... | 10 - 11 |
| TRUCK TIRE BEAD SPOTTER..... | 12 |
| GIANT TIRE VULCANIZER..... | 13 |
| ENVELOPE REPAIR VULCANIZER..... | 14 |
| LIGHT TRUCK TIRE VULCANIZER..... | 15 - 16 |
| MEDIUM TRUCK TIRE VULCANIZER..... | 17 - 18 |
| LIGHT AND MEDIUM VULCANIZER STAND..... | 19 |
| MULTI-USE TIRE VULCANIZER (OFF THE ROAD)..... | 20 - 21 |
| MODEL OTR VULCANIZER..... | 22 |
| CONTOUR PLATE PACKAGES..... | 23 - 25 |
| INDIVIDUAL CONTOUR PLATES..... | 26 - 28 |



L.M.C.VAN'S INC

Model 100

ITEM# TOO1

HEAVY DUTY TUBE PLATE VULCANIZER

LARGE CAPACITY TUBE REPAIR

- * Oversize frame allows plenty of room for all applications.
- * Snap-type thermostat enables heat unit to reach curing temperature fast.
- * Heavy duty vulcanizer for repairing all sizes of inner tubes and installing valve stems
- * Detachable flat plate for vulcanizing valve stems.
- * Available in 120V or 240V

Model 150 includes all the features of the Model 100 plus the larger heat unit.

Model 150

ITEM # TOO2

LARGE CAPACITY HD TUBE VULCANIZER

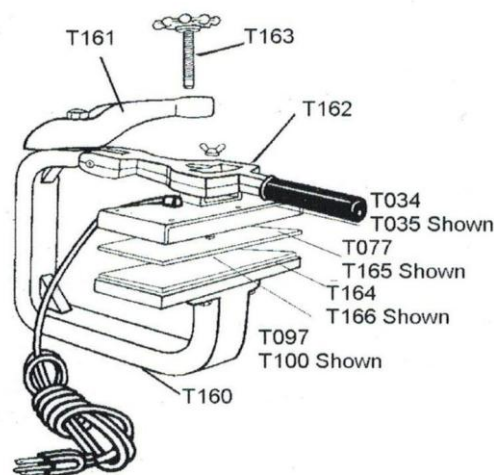


SPECIFICATIONS

| | | | |
|-------------------|-------------|-----------|-------------|
| Shipping weight: | 45 lb. | Model 100 | 18 kg. |
| Shipping weight: | 47 lb. | Model 150 | 21 kg. |
| Shipping Volume: | 1.39 cu. ft | | 39 ltr. |
| Curing head size | 4 x 6 in. | Model 100 | 10 x 15 cm. |
| Curing head size | 4 x 12 in. | Model 150 | 10 x 30 cm. |
| No. curing heads: | 1 ea. | | 1 ea. |
| Throat depth: | 9 in. | | 23 cm. |

PARTS BREAKDOWN

| Part No. | Model | Description |
|----------|-------|----------------------------------|
| T034 | 6 | Heat Unit (100) |
| T035 | 156 | Heat Unit (150) |
| T077 | 20 | Plate for heat unit (100) |
| T097 | RP-1 | Rubber pad (100) |
| T100 | RP-15 | Rubber pad (150) |
| T160 | 2 | Frame |
| T161 | 3 | Pressure Arm |
| T162 | 24 | Handle |
| T163 | 27 | Hand-wheel screw |
| T164 | S-5 | Rubber pad plate (100) |
| T165 | 10L | Plate for heat unit (150) |
| T166 | L-5 | Rubber pad plate (150) |
| T146 | | Thermostat for 4" x 6" HU (100) |
| T147 | | Thermostat for 4" x 12" HU (150) |
| T127 | | Element for 4" x 6" HU |
| T122 | | Electrical Cord |



Tube Plate Vulcanizer

Model 200

ITEM# TOO3

THE ECONOMICAL TUBE REPAIR OPTION

This tube plate will make a better repair on the most common sizes of tubes at a lower cost than any other method.

- * Heat unit with snap-type thermostat reaches curing temperature fast.
- * Detachable flat plate for vulcanizing valve stems.
- * Available in 120V or 240V

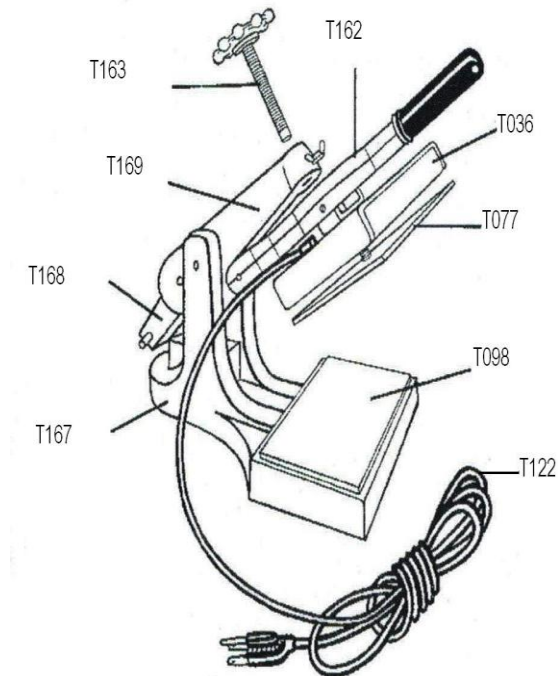


SPECIFICATIONS

| | |
|-------------------|--------------|
| Shipping weight: | 27 lb. |
| Shipping volume: | 0.75 cu. ft. |
| Curing head size: | 4 x 6 in. |
| No. curing heads: | 1 ea. |
| Throat depth: | 6 in. |

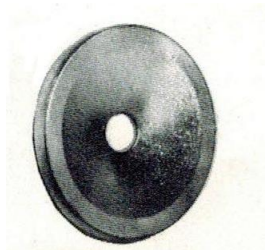
PARTS BREAKDOWN

| Part No. | Model | Description |
|----------|-------|---------------------------|
| T036 | 26 | Heat Unit |
| T077 | 20 | Plate for heat unit |
| T098 | RP-2 | Rubber pad |
| T162 | 24 | Handle |
| T163 | 27 | Hand-wheel screw |
| T167 | 21 | Frame |
| T168 | 22 | Trigger |
| T169 | 23 | Pressure Arm |
| T146 | | Thermostat for 4" X 6" HU |
| T127 | | Element for 4 x 6" HU |
| T122 | | Electrical Cord |

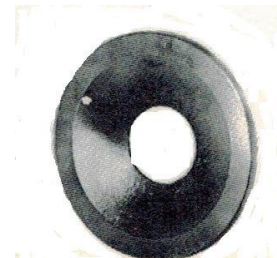


VALVE STEM ADAPTER PLATES

| Part No. | Model | Description |
|----------|-------|---|
| T075 | 17 | Truck valve stem adapter plate, 3-1/4" |
| T076 | 18 | Tractor valve stem adapter plate, 3-1/4" diameter |



T075 - #17



T076 - #18



Passenger Tire Vulcanizer

MODEL 300

ITEM # T005

TREAD-AREA REPAIRS ARE EASY WITH THIS LIGHTWEIGHT, PORTABLE VULCANIZER

Now you can repair nail holes and other punctures in passenger tires the professional way - with heat. Unit flows repair rubber through the injury to protect cord and steel belts from moisture and contamination.

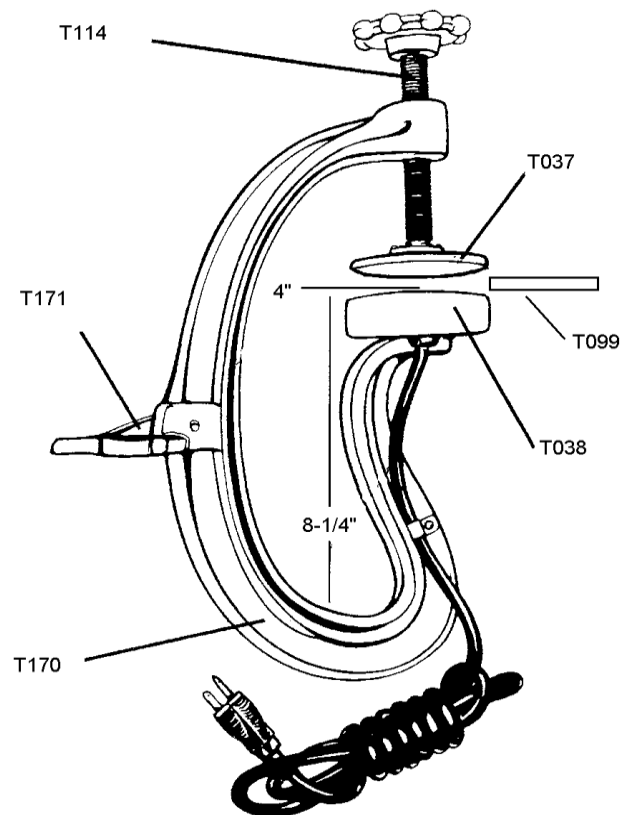
- * Accommodates passenger-size tube and tubeless tires.
- * Thermostatically controlled heat unit reaches operating temperature quickly and maintains it evenly.
- * Bench-mount or portable.
- * Available in 120V or 240V

SPECIFICATIONS

| | |
|-------------------|--------------|
| Shipping weight: | 12 lb. |
| Shipping volume: | 0.35 cu. ft. |
| Curing head size: | 3-5/16 in. |
| No. curing heads: | 1 ea. |
| Throat depth: | 4 in. |
| Throat height: | 8-1/4 in. |

PARTS BREAKDOWN

| Part No. | Model | Description |
|----------|-------|--|
| T037 | 33 | Top pressure plate |
| T038 | 34 | Heat unit, fixed (Specify 120 or 220 Volt) |
| T099 | RP-3 | Rubber pad |
| T114 | 36 | Pressure Screw |
| T170 | 31 | Frame |
| T171 | 32 | Mounting bracket |
| T123 | | Thermostat for 3" HU |
| T124 | | Element for 3" HU (Specify 120 or 220 Volt) |
| T122 | | Electrical Cord |



Optional Accessory

T149 Contour Plate Set
T078 (45), T079 (48), T080 (49)
Shipping Wt 2#



Truck Tire Vulcanizer
Model 400B
ITEM# T006

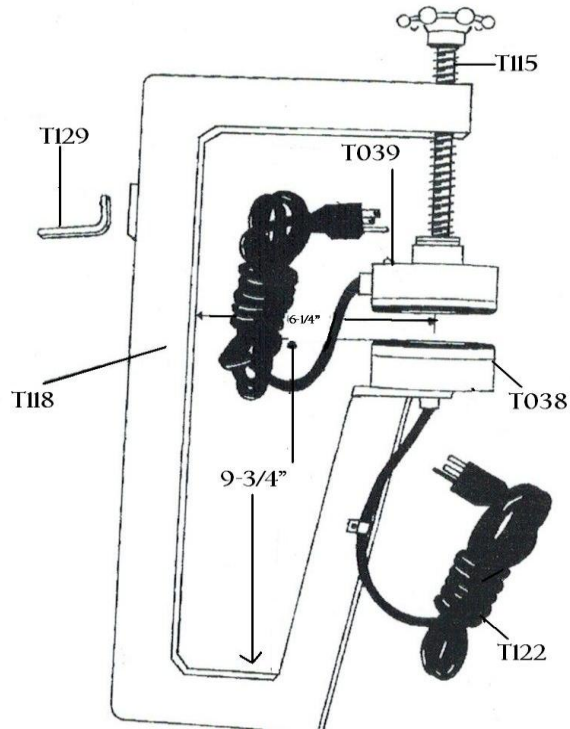
LIGHTWEIGHT, EASY TO HANDLE
MODEL 400 FEATURES A PLATEN MOUNTED
THERMOSTAT WHICH REDUCES HEAT UP
TIME

SPECIFICATIONS

| | |
|----------------------|-----------------|
| Shipping Wt | 14 lbs |
| Throat Depth | 6-1/4" |
| Throat Height A | 9-3/4" |
| Throat Depth B | 15-3/8" |
| Curing Heads | (2) 3-5/16" Dia |
| 110 Volt or 220 Volt | |

PARTS BREAKDOWN

| Part No. | Model | Description |
|----------|-------|---|
| T118 | 41-B | Frame |
| T129 | 42-B | Mounting Bracket |
| T039 | 43 | Upper Heat Unit (Specify 120 or 220 volt) |
| T038 | 34 | Lower Heat Unit (Specify 120 or 220 volt) |
| T115 | 46-B | Pressure Screw |
| T123 | | Thermostat for 3" Heat Unit |
| T124 | | Element for 3" Heat Unit (Specify 120 or 220 volt) |
| T122 | | Electrical Cord |



- * Tubular steel frame reduces unit weight from 18# to 12#.
- * Faster travel, Acme Thread handwheel screw
- * Larger capacity frame allows repairs in tires thru 12:00 cross section.
- * High performance heat units feature platen mounted preset (European approved) thermostats which reduces heat-up time from 15 minutes to 5 minutes.

Optional Accessory

T150 Contour Plate Package

T078(45), T079(48), T080(49), T081(55), T082(58A), T083(58), T084(58S) T085(59)

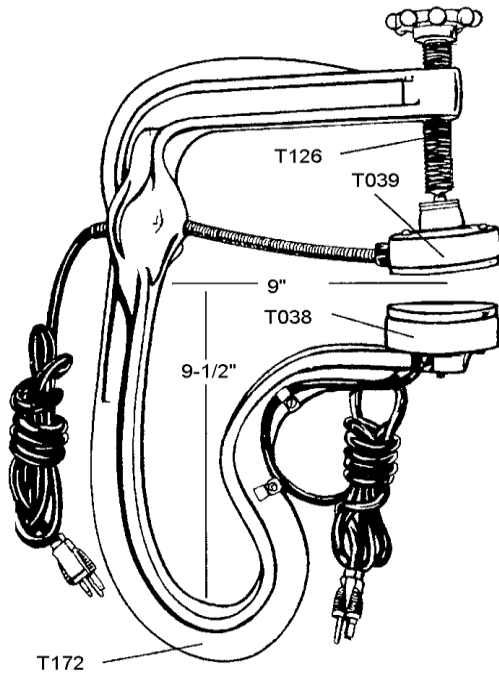
Shipping Wt 8#



MODEL 500

ITEM# T009

- * Repairs injuries and cures plug in Tractor Tires to 13:00 cross section.
- * Inside - Outside Heat Units - Substantially reduces curing times.
- * Independantly operating thermostatically controlled heat units reach and maintain curing temperature quickly and efficiently.
- * Available in either 120V or 240V.



TRACTOR TIRE VULCANIZER



SPECIFICATIONS

| | |
|------------------|-----------------------|
| Shipping weight: | 22# |
| Throat Depth: | 9" |
| Throat Height: | 14-1/2" |
| Curing Heads: | (2) 3- 5/16" Diameter |

PARTS BREAKDOWN

| Part No | Model | Description |
|---------|-------|---|
| T172 | 51 | Frame |
| T039 | 43 | Upper (Swivel) Heat Unit (Specify 120 or 220 volt) |
| T038 | 34 | Lower Heat Unit (Specify 120 or 220 volt) |
| T126 | 56 | Handwheel & Pressure Screw |
| T123 | | Thermostat for 3" HU |
| T124 | | Element for 3" HU |
| T122 | | Electrical Cord (Specify 120 or 220 volt) |



T151 Optional Plate Package

Shipping Wt 11#
 T078(45), T079(48), T080(49), T081(55), T082(58A),
 T083(58), T085(59), T088 (L1), T090(R1), T094(P1)
 T095 (B2)

LARGE TRUCK-TRACTOR VULCANIZER

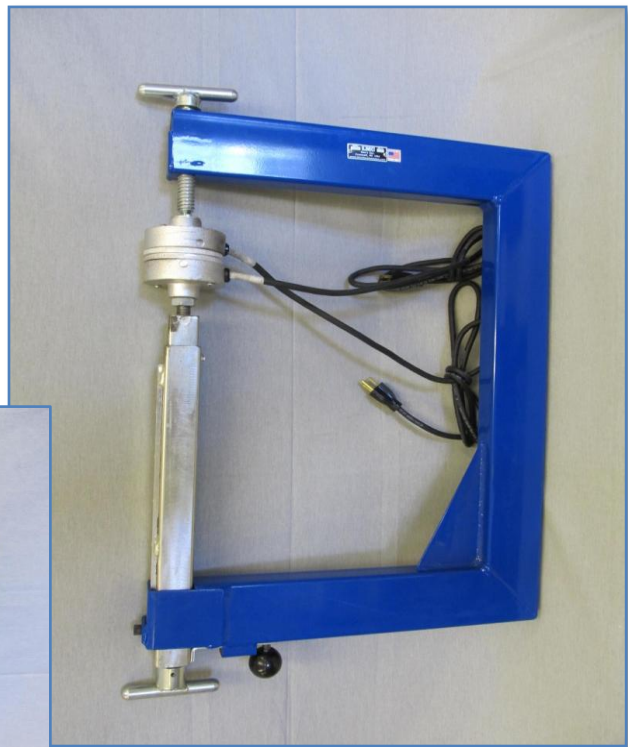
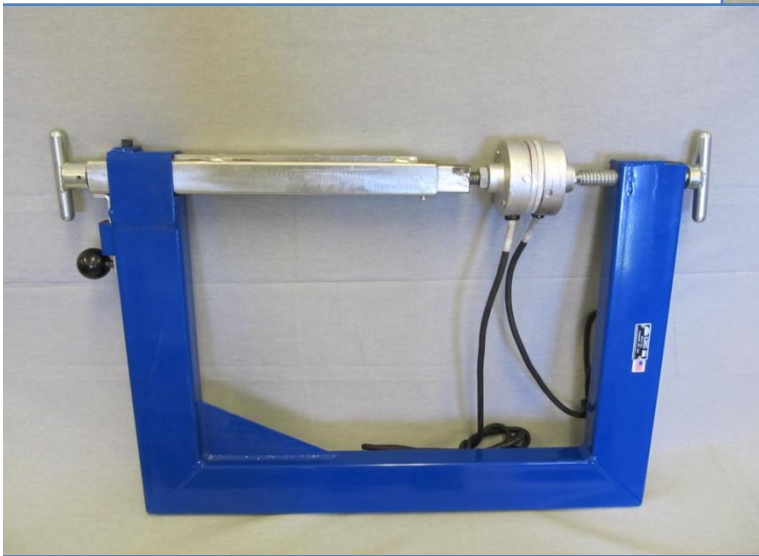
MODEL 1000

ITEM #TO11

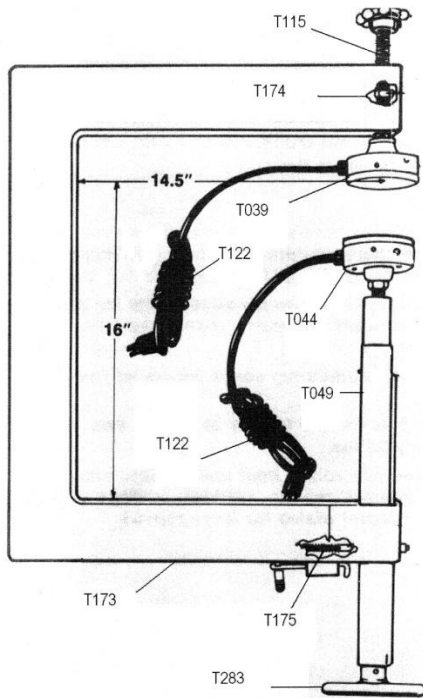
- * Spring loaded lower heat unit maintains even pressure throughout curing process- eliminates frequent re-tightening of heat units.
- * Lower telescoping assembly slides back for quick mounting or removal of spotter, then locks into position for use.
- * Acme threaded adjusting screw for upper heat unit.
- * Solid one-piece frame is easy to handle and weighs only 30 lbs.
- * 3-5/16 diameter round heat units fit into close quarters for small repairs, yet have wattage output to handle adapter plates for large repairs.
- * Model 1000 has capacity to spot and section repair in all truck, tractor and even many off road tires.
- * Available in 120 volt or 240 volt

SPECIFICATIONS

| | |
|-------------------|------------------|
| Throat depth | 14-1/2 in. |
| Throat height: | 16 in. |
| Curing heads (2): | 3-5/16" diameter |
| Shipping weight: | 30 lb |



MODEL 1000 - TO11



PARTS BREAKDOWN

| Part No. | Model | Description |
|----------|-------|--|
| T173 | 1001 | Frame for Model 1000 |
| T039 | 43 | Upper swivel heat unit (3-5/16" diameter) |
| T044 | 1004 | Lower spring loaded heat unit (3-5/16" dia.) |
| T115 | 46B | Handwheel adjusting screw (upper) |
| T174 | | Nut for part No T115 |
| T049 | 1007 | Telescoping pressure screw assembly (lower) |
| T175 | 1008 | Compression Spring |
| T176 | 1009 | Fiber rod |
| T123 | | Thermostat for 3" HU |
| T124 | | Element for 3" HU |
| T122 | | Electrical Cord |
| T283 | | Telescoping Handle |

OPTIONAL ACCESSORIES

| | | |
|------|-----|---|
| T152 | | Contour Plate Package contains - 12 (T078, T079, T080, T081, T082, T083, T084, T085, T088, T090, T094, T095) Shipping Wt 13 lb |
| T078 | 45 | 4" Shoulder contour plate |
| T079 | 48 | 4" inside contour plate |
| T080 | 49 | 4" Outside contour plate |
| T081 | 55 | 5" Shoulder contour plate |
| T082 | 58A | 5" Inside contour plate - flat radius |
| T083 | 58 | 5" Inside contour plate - normal radius |
| T084 | 58S | 5" Outside contour plate - sharp radius |
| T085 | 59 | 5" Outside contour plate |
| T088 | L1 | 4" x 5-1/4" Left outside tractor plate |
| T090 | R1 | 4" x 5-1/4" Right inside tractor plate |
| T094 | P1 | 4-3/8 x 6-3/8 Flat back-up plate (For use with B-2 (T095) bags, 2 required) |
| T095 | B2 | 5" x 7" Pliable contour bag (For use with P-1 plates, 2- required) |



"FLEXIBLE CONTOUR" TRACTOR TRUCK AIR SPOTTER

SPOT REPAIR - SECTION REPAIR

MODEL 1400

ITEM # TO18

- * Air regulated pressure takes guess work out of how much pressure to apply. Flexible silicone rubber heat pads conforms to tire contour.
- * Capable of curing a 3-1/2" spot or section repair plug in one cure.
- * Can be used in a multiple cure fashion to achieve repairs larger than 3-1/2".
- * Controlled temperature 4" dia. Heat pad conforms to tire contour and applies even pressure over entire repair area, capturing and curing repair rubber
- * Not an air bag - this is a flexible silicone rubber heat pad contained in a cylinder and driven by air pressure.
- * Long life silicone rubber heat pad. Test units have exceeded 1000 hours of use.
- * Frame mounted air regulator set to operate at 65 lbs psi assures adequate even pressure throughout cure cycle. Regulator is protected by rugged frame bracket.
- * The perfect spotter for large tractor and small off-the-road tires, and also makes excellent truck repairs.
- * Available in 120 volt or 240 volt.



SPECIFICATIONS

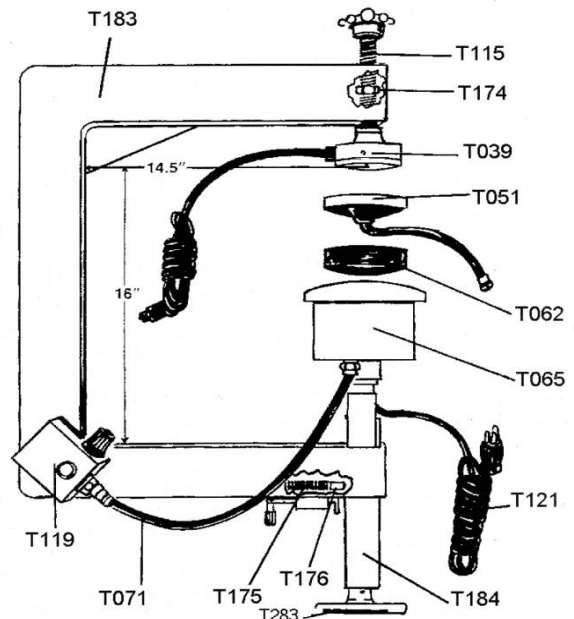
| | |
|------------------|-----------|
| Shipping weight: | 36 lb |
| Throat depth: | 14-1/2 in |
| Throat height: | 16 in |

MODEL 1400 (T018)

PARTS BREAKDOWN

| Part No. | Model | Description |
|----------|--------|---|
| T183 | | Model 1400 Frame |
| T039 | 34 | Upper swivel heat unit (3-5/16" diameter) |
| T051 | AS4-14 | Silicone rubber flat heat pad (4" diameter) with electrical connection. |
| T062 | AS-5-4 | 4" silicone rubber air seal |
| T065 | AS - 6 | Steel air cylinder with contoured lip |
| T184 | AT-7 | Telescoping pressure screw assembly (lower). |
| T119 | AT-9 | Air regulator (preset to 65 lbs.) |
| T120 | AS-9B | Gauge for regulator |
| T071 | AS-10B | Air hose from regulator to cylinder |
| T121 | AS-11 | Detachable electric cord for heat pad |
| T115 | | Handwheel adjusting screw (upper) |
| T174 | 1006 | Nut for adjusting screw |
| T175 | 1008 | Compression spring |
| T176 | 1009 | Fiber rod |
| T123 | | Thermostat for 3" HU |
| T124 | | Element for 3" HU |
| T283 | | Telescoping Handle |
| T122 | | Electrical Cord |

T154 Contour plate package contains 11 Items
T078(45), T079(48), T080(49), T081(55),
T082(58A), T083(58), T084(58S), T085(59),
T088(L1), T094(P1), T095(B2)



AIR-OPERATED TRUCK TIRE VULCANIZER

MODEL 2000

ITEM # T026

THE ULTIMATE FLEXIBILITY IN TIRE REPAIR

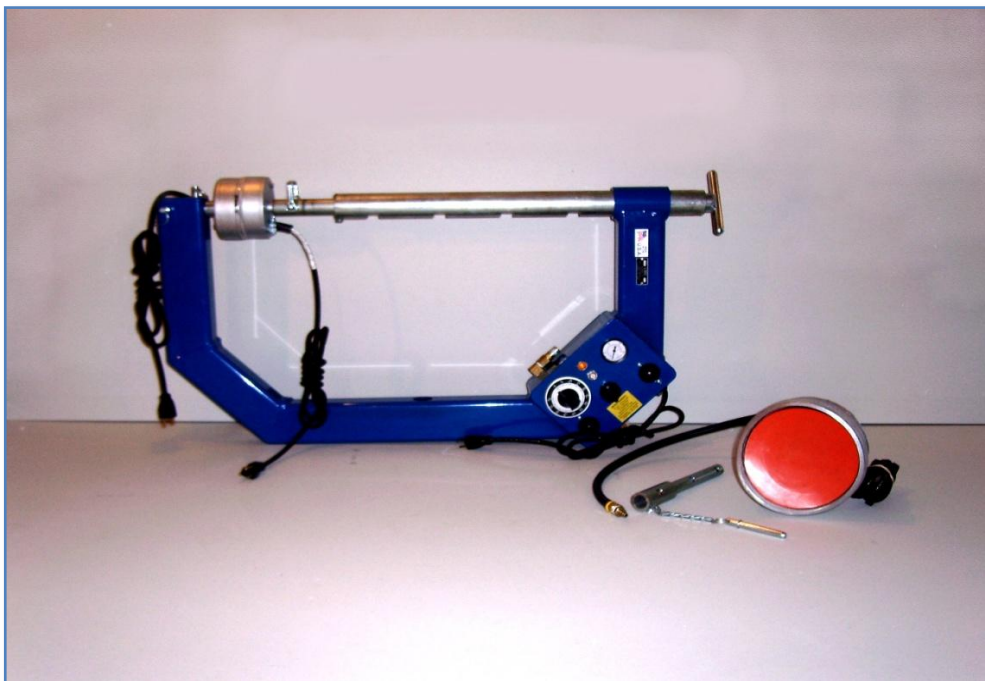
The 2000 Vulcanizer is the only spotter in the market that handles tread, shoulder, and sidewall repairs on all kinds of tires-from low profile to super singles. It will handle future tire sizes by simply changing contour plates.

- * Patented piston/pad system for expert repairs - even by novice operators.
- * Inside - outside heat system.
- * Spring loaded mechanical pressure, with solid heat units for tread and shoulder repairs.
- * No expensive air bags to replace
cost an average of less than 30 cents per cure.
- * Optional large-capacity Model TS stand (T033) supports both tire and vulcanizer with dual 16" rollers for easy tire rotation.

- * Optional plate package (T156) contains 9 plates, T086(68), T087(68S), T130(TPI), T131(TPO), T132, T133(255SH), T133(285SH), T134(SHO), T135(255SW) T136 which fit Vulcanizer 2000 (T026)
- * Available in 120 volt or 240 volt

SPECIFICATIONS

| | | |
|-------------------|--------------|----------|
| Shipping weight: | 74 lb. | 30 kg. |
| Shipping volume: | 3.84 cu. ft. | 108 ltr. |
| Curing head size: | 6 in. | 15 cm. |
| No. curing heads: | 3 ea. | 3 ea. |
| Throat depth: | 11-1/2 in. | 29 cm. |
| Throat height: | 24-1/2 in. | 62 cm. |

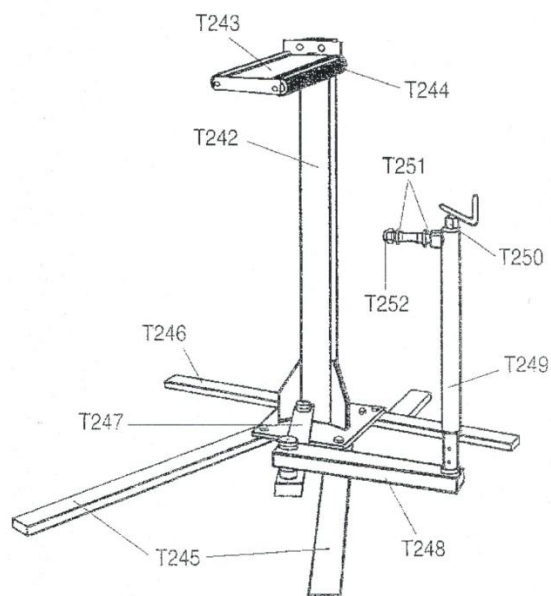
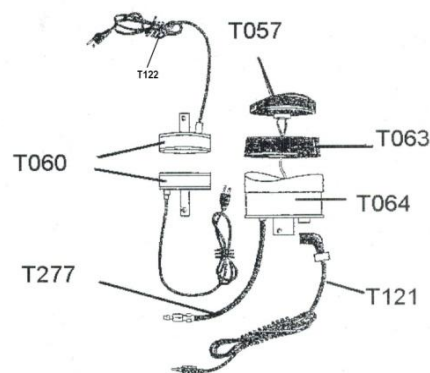
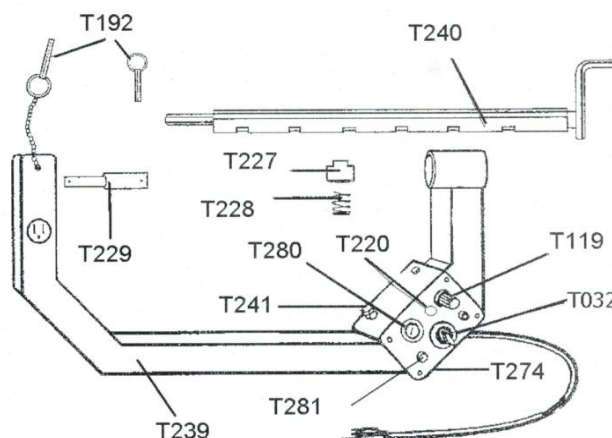


MODEL 2000 (T026)

PARTS BREAKDOWN

Part No.

| | | |
|------|--------|--|
| T057 | AS4-16 | Contoured silicone rubber heat pad (6" diameter) with electrical connection |
| T060 | AS3-20 | Solid heat units |
| T063 | AS5-6 | Silicone rubber air seal (6" diameter) |
| T064 | AS6-20 | Steel air cylinder with contoured lip |
| T121 | AS11 | Detachable electrical cord for T057 |
| T032 | | 1 Hour timer |
| T156 | | Contour Plate Package |
| T192 | | Detent pin |
| T227 | | Plunger |
| T228 | | Spring |
| T229 | | Extension shaft |
| T239 | | Frame |
| T240 | | Telescoping assembly |
| T277 | | Air hose with 2 fittings |
| T119 | AS9 | Air regulator |
| T220 | | Pilot Light |
| T277 | | Air hose w/fitting |
| T274 | | Humphrey Valve |
| T280 | | Panel Mount Air Gauge |
| T281 | | Circuit Breaker |
| T145 | | Thermostat for 4" HU |
| T125 | | Element for 4" HU |
| T122 | | Electrical Cord |
| T241 | | Quick Disconnect |



OPTIONAL ACCESSORY

| | |
|------|--------------------------|
| T033 | Spotter/Tire Stand |
| | Shipping Wt 138 lb |
| T156 | Model 2000 plate set (9) |
| | Shipping Wt 30 lb |



TRUCK TIRE BEAD SPOTTER

MODEL 3100 PL

ITEM# T029

- * Small in size, large capacity - capable of 7" spot repair.
- * Simple to operate - position vulcanizer on bead, align and tighten
- * Portable, weighs only 22 lbs.
- * Inside - Outside heat units
- * Price includes plates to repair both 22.5 and 24.5 radial and bias-ply, tubeless tires.
- * Repairs damaged bead coverings on Radial and bias-ply, tubeless Truck tires.
- * Available in 120V or 240V

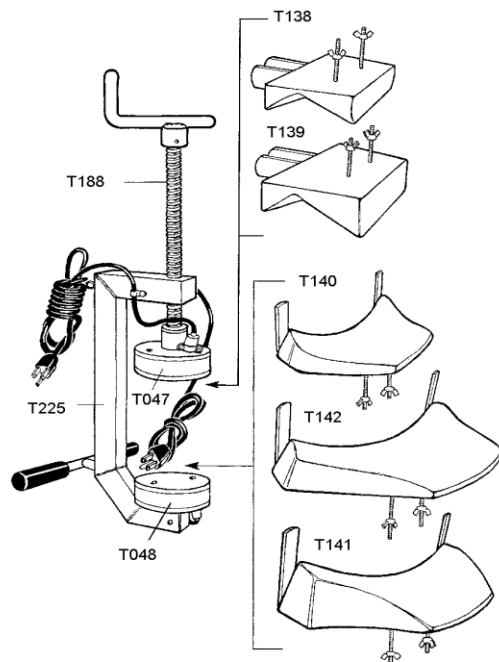
SPECIFICATIONS

| | | |
|-------------------|-------------|--------|
| Shipping weight: | 38 lb | 17kg |
| Shipping volume: | 2.32 cu.ft. | 66ltr |
| Curing head size: | 4 in. | 10 cm. |
| No. curing heads: | 2 ea. | 2 ea. |
| Throat depth: | 3-1/2 in. | 9 cm. |



PARTS BREAKDOWN

| Part No. | Model | Description |
|----------|--------|---|
| T047 | 31-3 | Outside heat unit, swivel |
| T048 | 3-4 | Inside heat unit, fixed |
| T138 | 31-31 | Outside bead contour plate (radial ply) |
| T139 | 31-31S | Outside bead contour plate (bias ply) |
| T140 | 31-22 | Inside bead contour plate (22.5 radial) |
| T141 | 31-22B | Inside bead contour plate (22.5 bias) |
| T142 | 31-24 | Inside bead contour plate (24.5 radial) |
| T188 | | Hand-wheel and pressure screw |
| T225 | | Frame |
| T125 | | Element for 4" HU (Inside the T048 & T047) |
| T145 | | Thermostat for 4" HU |
| T122 | | Electrical Cord |



ENVELOPE REPAIR VULCANIZER

MODEL ERV

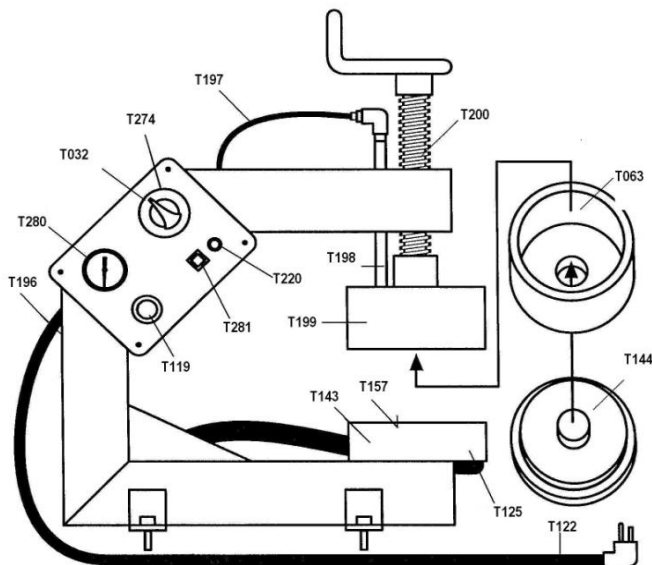
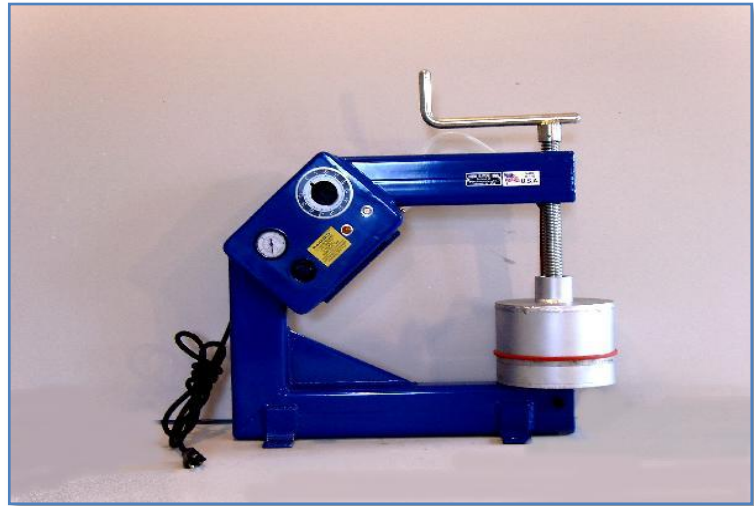
ITEM # T148

AIR OPERATED UNIT MAKES ALL TYPES OF ENVELOPE, CURING-TUBE AND INNER-TUBE REPAIRS

- * Saves expensive replacement costs.
- * Patented air-driven silicone rubber piston pad provides totally even pressure, resulting in a smooth, feathered patch.
- * Built-in timer turns off heat, air flow and electricity for total unattended shutdown.
- * Current indicator lamp.
- * Manually adjustable air regulator and gauge are factory preset to 50 psi.
- * Bench - mount bracket included.
- * Circuit breaker.
- * **Available in 120V or 240V**

SPECIFICATIONS

| | | |
|-------------------|--------------|---------|
| Shipping weight: | 54 lb. | 25kg |
| Shipping volume: | 2.14 cu. Ft. | 61 ltr. |
| Curing head size: | 6 in. | 15 cm. |
| No. curing heads: | 1 ea. | 1 ea. |
| Throat depth: | 14-1/2 in. | 37 cm. |



PARTS BREAKDOWN

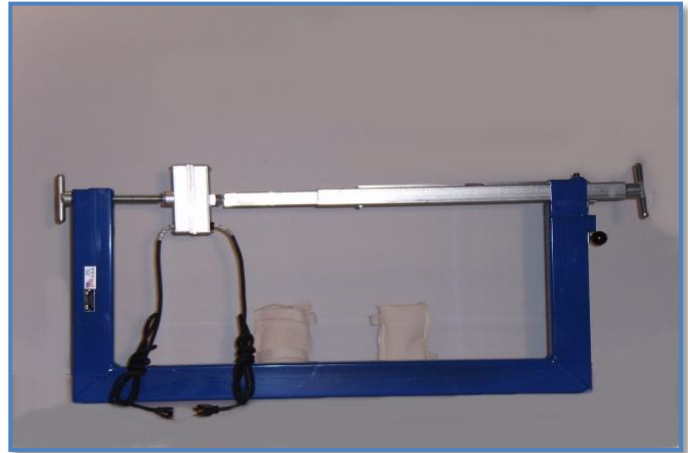
| Part No. | Model | Description |
|----------|----------|--|
| T032 | | One Hour Timer |
| T063 | AS5-6 | Silicone Rubber air seal (6" Dia.) |
| T119 | AS9 | Air Regulator |
| T143 | AS3-ERV | Lower Heat Unit (Includes T157, T125) |
| T144 | AS4-ERV | Silicone Rubber Pad (6" Dia.) |
| T157 | | B200 Thermostat 6" |
| T196 | AS1-ERV | Frame |
| T197 | AS2-ERV | Flexible air tube (with fitting) |
| T198 | AS2A-ERV | Rigid air tube (with fitting) |
| T199 | AS6-ERV | Steel air cylinder |
| T200 | AS8-ERV | Hand-wheel and pressure screw |
| T220 | | Pilot Light |
| T274 | | Humphrey Valve |
| T280 | | Panel Mount Air Gauge |
| T281 | | Circuit Breaker |
| T125 | | Element for 4" HU |
| T122 | | Electrical Cord |

GIANT TIRE VULCANIZER WITH CONTOUR BAGS

MODEL GT-2

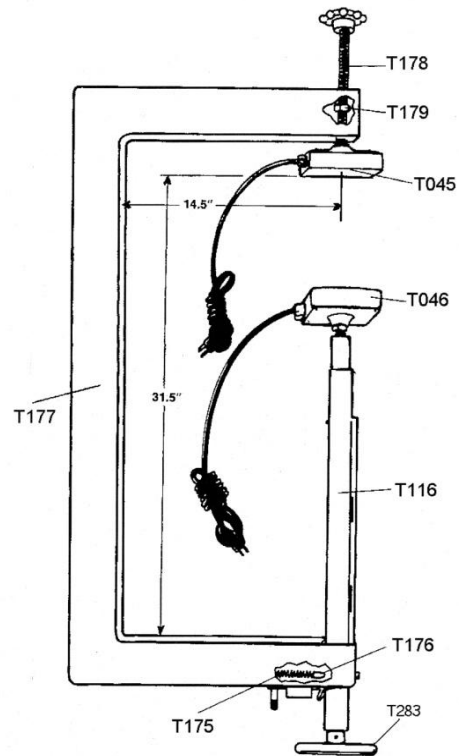
ITEM # T013

- * Ideal for making small repairs on giant tires.
- * Independently operating thermostatically-controlled heat units reach and maintain operating temperature quickly and efficiently.
- * Spring loaded lower heat unit maintains even pressure throughout curing process.
- * Lower telescoping assembly slides back for quick mounting/removal of spotter - then locks into desired position for use.
- * All acme threaded upper pressure screw and lower telescoping assembly for long, trouble free wear.
- * Spot and section repair grader and giant tires through 37.5 x 39".
- * Sidewall spot repairs possible without dismounting tire.
- * B-3 (T096) Pliable contour bags loops over heat unit and conforms to irregular surfaces while transferring heat and pressure.
- * Available in 120 or 240 volt.



PARTS BREAKDOWN

| | | |
|------|------|--|
| T177 | G101 | Frame for GT-2 |
| T045 | G103 | Upper (swivel heat unit (4-3/8" x 6-3/8")) |
| T046 | G104 | Lower (spring loaded) heat unit (4-3/8" x 6-3/8") |
| T178 | G105 | Handwheel adjusting screw (upper heat unit) |
| T179 | G106 | Nut for part no. T178 |
| T116 | G107 | Telescoping pressure screw assembly (lower heat unit) |
| T175 | G108 | Compression Spring |
| T176 | G109 | Fiber rod |
| T146 | | Thermostat for 4" x 6" HU |
| T127 | | Element for 4" x 6" HU |
| T096 | B3 | Pliable Contour bags (2) |
| T283 | | Telescoping Handle |
| T122 | | Electrical Cord |



LIGHT TRUCK TIRE VULCANIZER

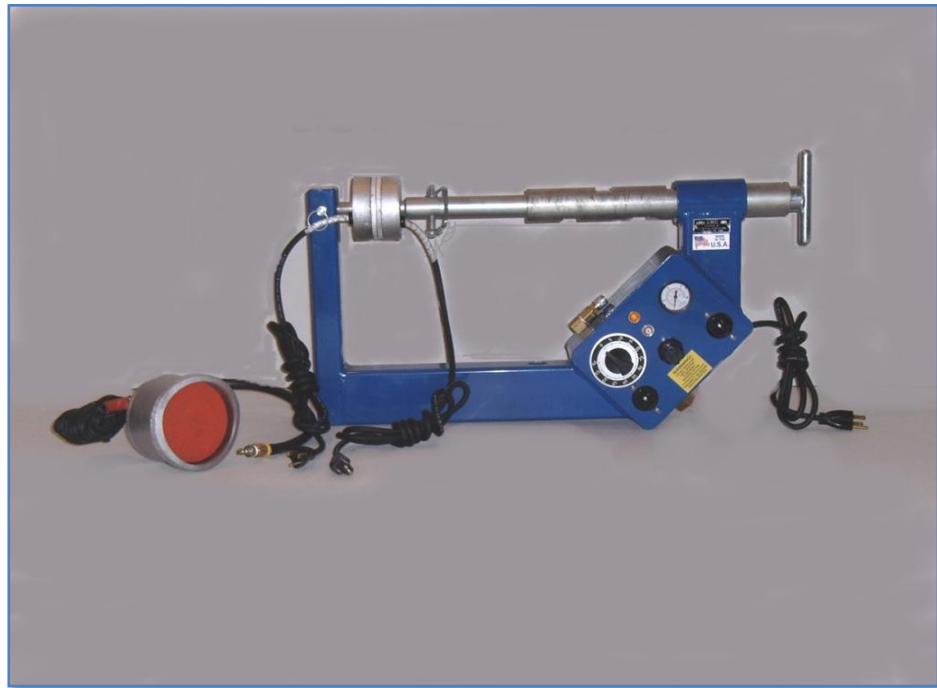
MODEL LT

ITEM # TOO1

THE NEW STANDARD FOR PASSENGER AND LIGHT TRUCK REPAIR

The all-new Model LT air-operated vulcanizer is the latest generation in repair equipment. Now you can repair the tread, shoulder, and sidewall areas of passenger and light truck tires with one vulcanizer.

- * Patented piston/pad air head produces professional-looking sidewall repairs that are unequalled in the industry.
- * Tread and shoulder areas are solidly repaired with constant pressure provided by contour plates and a spring-loaded compensating system.
- * Heat from both sides of tire offers maximum repair efficiency.
- * Optional stand (T031) supports tire on roller assembly for easy rotation. Horizontal orientation of spotter makes alignment with repair easy and eliminates stress from repair area.
- * For proper operation Contour plate set T153 contains 4 plates T078, T079, T080, T093 is required.
- * Available in 120 volt or 240 volt.



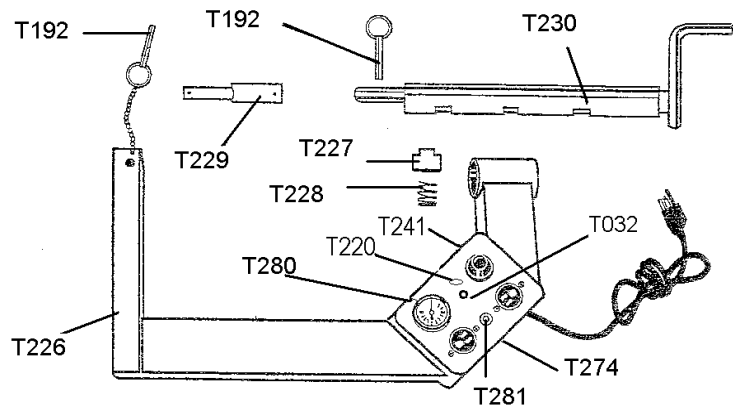
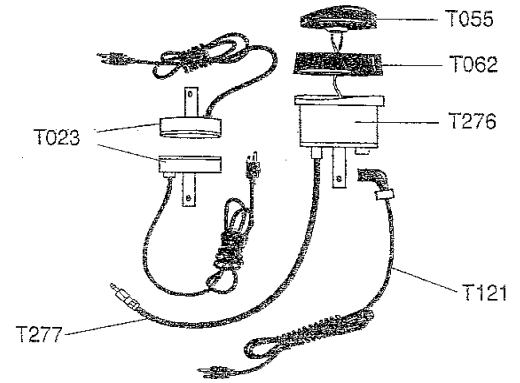
SPECIFICATIONS

| | | |
|-------------------|----------|----------|
| Shipping weight: | 44 lb | 20 kg. |
| Shipping volume: | 2 cu ft. | Model LT |
| Curing head size: | 4 in. | 10 cm. |
| No. curing heads: | 3 ea | 3 ea. |
| Throat depth: | 8 in. | 21 cm. |
| Throat height: | 19 in. | 48 cm. |

Model LT

PARTS BREAKDOWN

| Part No. | Model | Description |
|----------|--------|--|
| T192 | | Detent pin |
| T226 | | Frame |
| T227 | | Plunger |
| T228 | | Spring |
| T229 | | Inside heat unit extension shaft |
| T230 | | Telescoping assembly |
| T023 | AS3-LT | Heat units (2) - 3-5/16 dia. |
| T055 | AS4-15 | Contoured up silicone rubber heat pad (4" dia) |
| T062 | AS5-4 | Silicone rubber air seal (4" diameter) |
| T121 | AS11 | Detachable electrical cord for T055 |
| T276 | | Steel air cylinder with contoured lip |
| T277 | | Air hose w/fittings |
| T280 | | Panel mount air gauge |
| T274 | | Humphrey valve |
| T220 | | Pilot Light |
| T241 | | Quick Disconnect |
| T281 | | Circuit breaker |
| T123 | | Thermostat for 3" HU |
| T124 | | Element for 3" HU |
| T032 | | 1 Hour Timer |



OPTIONAL ACCESSORY

| | |
|------|-------------------------------|
| T031 | Spotter/tire stand |
| | Shipping Wt 75 lb. |
| T153 | Contour plate set for LT (4) |
| | T078(45), T079(48), T080(49), |
| | T093(AS3-CP) |
| | Shipoing Wt 4 lb. |

ADDITIONAL CONTOUR PLATES

| Part No. | Model | Description |
|----------|-------|--|
| T081 | 55 | Outside shoulder curing plate 5" diameter |
| T082 | 58A | Inside curing plate flat radius, 5" diameter |
| T083 | 58 | Inside curing plate, medium radius. 5" diamete |
| T084 | 58S | Inside curing plate, sharp radius 5" diameter |
| T085 | 59 | Outside tread plate, inside, 5" diameter |

MEDIUM TRUCK TIRE VULCANIZER

MODEL MT

ITEM # T022

STEP UP TO THIS VERSATILE VULCANIZER

The all-new Model MT (T022) air-operated vulcanizer is the latest generation in repair equipment. Now repair the tread shoulder, and sidewall areas of medium-sized (8:25 through 12:00) truck tires with one vulcanizer.

- * Patented piston/pad air head produces professional-looking sidewall repairs that are unequalled in the industry.
- * Tread and shoulder areas are solidly repaired with constant pressure provided by contour plates and a spring - loaded compensating system.
- * Heat from both sides of tire offers maximum repair efficiency.
- * Optional stand (T031) supports tire on roller assembly for easy rotation. Horizontal orientation of spotter makes alignment with repair easy and eliminates stress from repair area.
- * For proper operation Contour plate set T155 contains 5 plates (T086, T087, T130, T131, T134) is required.
- * Available in 120 volt or 240 volt.

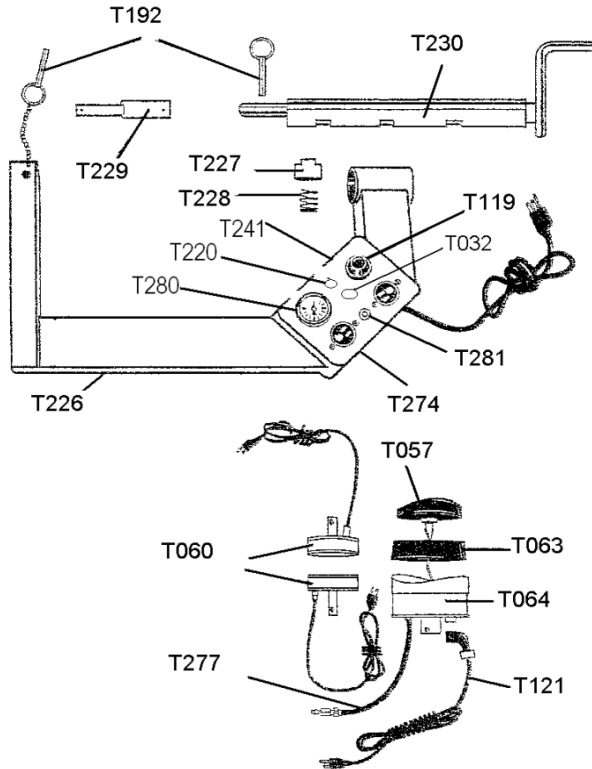


SPECIFICATIONS

| | | |
|-------------------|----------|-------------|
| Shipping weight: | 52 lb. | 23 kg. |
| Shipping volume: | 2 cu ft. | 60.96 cu.cm |
| Curing head size: | 6 in. | 15 cm. |
| No. curing heads: | 3 ea. | 3 ea. |
| Throat depth: | 8 in. | 21 cm. |
| Throat height: | 19 in. | 48 cm. |

MODEL MT

ITEM # T022



PARTS BREAKDOWN

| Part No. | Model | Description |
|----------|--------|---|
| T192 | | Detent pin |
| T226 | | Frame |
| T227 | | Plunger |
| T228 | | Spring |
| T229 | | Inside heat unit extension shaft |
| T230 | | Telescoping assembly |
| T057 | AS4-16 | Contour up silicone rubber heat pad (6" diameter) |
| T060 | AS3-20 | Heat units- 4" (2) |
| T063 | AS5-6 | Silicone rubber seal (6" diameter) |
| T064 | AS6-20 | Steel air cylinder with contoured lip |
| T121 | AS11 | Detachable electrical cord for T057 |
| T277 | | Air hose with fittings |
| T280 | | Panel Mount Air Gauge |
| T281 | | Circuit Breaker |
| T274 | | Humphrey Valve |
| T220 | | Pilot Light |
| T119 | AS9 | Regulator Low pressure |
| T145 | | Thermostat for 4" HU |
| T125 | | Element for 4" HU |
| T032 | | 1 Hour Timer |

OPTIONAL ACCESSORY

| | |
|------|---|
| T031 | Spotter/Tire Stand Shipping Wt 75 lb. |
| T155 | Contour plate set for MT (5) T086(68), T087(68S), T130(TPI), T131(TPO), T134(SHO) Shipping Wt 16 lb. |

ADDITIONAL CONTOUR PLATES

| Part No. | Model | Description |
|----------|-------|---|
| T132 | 255SH | Shoulder plate inside, for 255 low profile tires |
| T133 | 285SH | Shoulder plate, inside for 285 low profile tires. |
| T135 | 255SW | Sidewall plate. Inside for 255 low profile tires. |
| T136 | 285SW | Sidewall plate. Inside for 285 low profile tires. |

MULTI-USE TIRE VULCANIZER

MODEL 2500

ITEM # TOO4

Agricultural, Skidder and Other Off-The-Road Repair.

The New Multi-Use Tire Vulcanizer is the ideal size to handle tire repairs on light and medium construction equipment, agricultural tractors, and logging skidders, and mining equipment. Plus it is the most economically priced vulcanizer of its size on the market, so you can make tire repairs for a fraction of the cost of a replacement tire.

- * Accommodates mid-range tires from 20.5 x 25 handling OTR sizes up to 29.5 x 35 and skidder tires up to 30.5 x 32.
- * Easy, one person operation, including quick adjust tightening device.
- * 8" x 11" inside and 8" x 15" outside Adjust-A-Plate contour plate system conforms to heating surface of tire contours.
- * Makes tread, shoulder, and sidewall repairs
- * Air-Actuator bag applies over 5000 lbs. pressure evenly over entire repair area.
- * Thermostatically controlled heat units to maintain optimum temperature.
- * Built in-five-hour timer shuts off heat units when curing cycle is complete
- * Wheeled cart provides maximum mobility
- * Available Only in 120 Volt (11 amps).

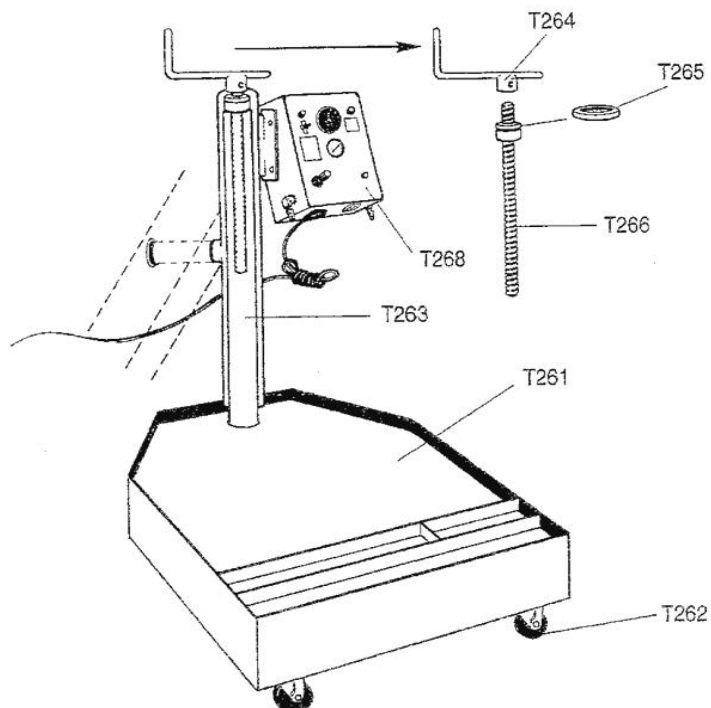
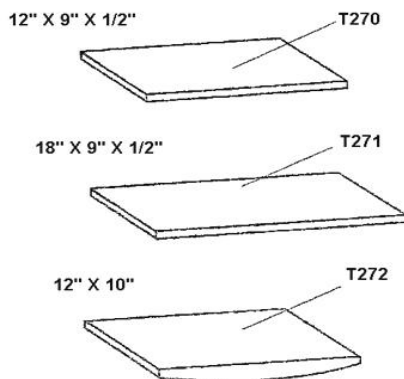
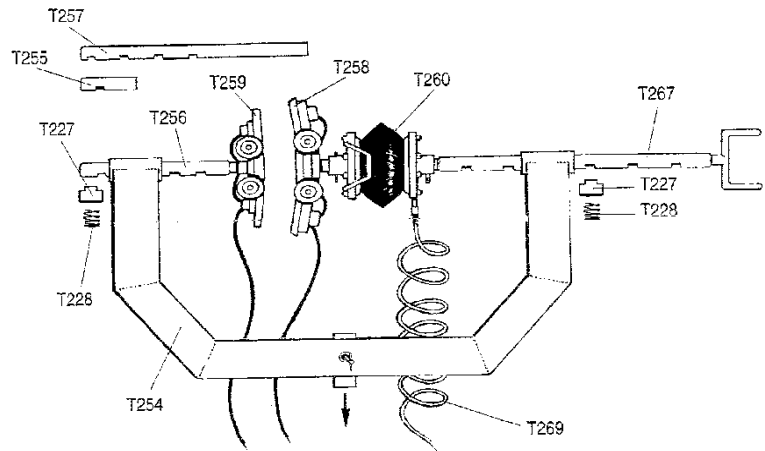


| | | |
|-------------------|-----------|----------------|
| Shipping weight: | 950 lb | 432 kg. |
| Shipping volume: | 50 cu ft. | 1,422 ltr. |
| Curing head Size: | 8" x 10" | 20 cm x 28 cm. |
| | 8" x 15" | 20 cm x 38 cm. |
| No. Curing Heads: | 2 | 2 |
| Throat Depth: | 18 in. | 46 cm. |
| Throat Height: | 32.5 in. | 83 cm. |

MODEL 2500

ITEM # TOO4

| Parts | Description |
|-------|--|
| T227 | Plunger |
| T228 | Spring |
| T254 | Frame |
| T255 | Short Extension Shaft |
| T256 | Medium Extension Shaft |
| T257 | Long Extension Shaft |
| T258 | Heat Unit (actuator side) |
| T259 | Heat Unit (ext shaft side) |
| T260 | Air actuator assembly |
| T261 | Cart |
| T262 | Casters |
| T263 | Raise/Lower outer tube |
| T264 | Handle |
| T265 | Bearing |
| T266 | Threaded Rod |
| T267 | Telescoping assembly (complete) |
| T268 | Control Panel (complete) |
| T269 | Air Hose |
| T270 | 9" x 12" x 1/2" silicone rubber pad |
| T271 | 9" x 18" x 1/2" silicone rubber pad |
| T272 | 10" x 12" contoured silicone rubber pad |
| T286 | Garlock Set 3pcs 8" x 11" and 3 pcs 8" x 15" |



L. M. C. VAN'S INC

Model OTR

ITEM# TO30

OFF-THE-ROAD TIRE VULCANIZER

"An Innovation in Giant Tire Repair"

The OTR- Vulcanizer from L.M.C. Vans makes giant tire repairs for a fraction of the replacement cost of a new tire.



| | | |
|---------------------------|-----------------------------------|----------------|
| Shipping Volume | 192 cu. Ft 5.6 cu mtrs. | |
| Contour plate size | 2- 12" x 15 31 cm. x 38 cm | |
| | 1- 8" X 10" | |
| No. curing heads | 3 ea. | 3 ea. |
| Air pressure | 125 psi | 9 bar |
| Throat Depth | 26 in. | 66 cm. |
| Throat Height | 44 in. | 112 cm. |
| Shipping Wt. | 1750 lbs. | 909 kg. |



- * Easy to use - requires only one operator
- * Accommodates a wide range of tires from 20.5 x 25 to 45/65 x 45
- * Remote - control hydraulic cylinder raises and lowers vulcanizing unit.
- * Shipped fully assembled
- * Thermostatically - controlled Adjust - A - Plates conform to tires contours.
- * Air - actuator bag applies consistent pressure across repair area.
- * Capable of curing large repairs.
- * Casters for easy rotation, maximum mobility.
- * Twelve - hour timer ---shuts heat units off when curing cycle is complete.
- * Extension shafts supplied to accommodate various tire sidewall depths.
- * Depth - 60", Width - 36", Height - 72"
- * Two 13" x 18" and One 10" x 12" Silicone Rubber Heat unit cushion pads.
- * Available Only in 120 volt - 15 amps.

CONSULT L.M.C. VANS INC FOR REPLACEMENT PART INFORMATION

Page 22

TO ORDER CALL: 800.221.4109

www.lincolnvulcanizers.com
lmcvans@sbcglobal.net

4446 Peck Road
Croswell, MI 48422

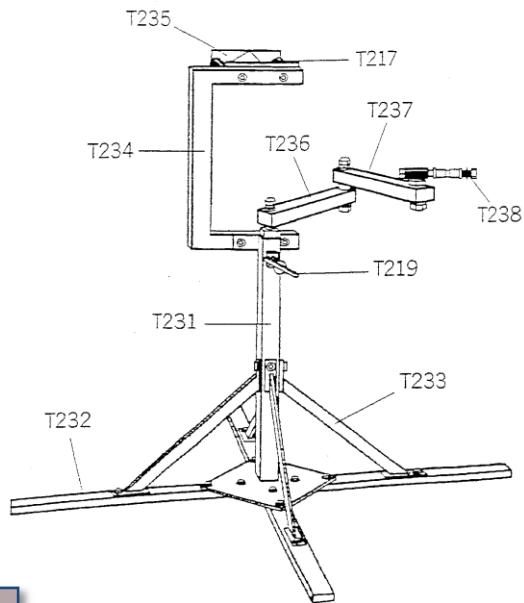
LT/MT STAND
SPOTTER/TIRE STAND
ITEM # TO31

PARTS BREAKDOWN

| Part No. | Description |
|----------|------------------------------|
| T217 | Rollers (2) |
| T219 | Handwheel screw with nut |
| T231 | Center post with base |
| T232 | Legs (4) |
| T233 | Leg supports (4) |
| T234 | Roller support frame |
| T235 | Tire support frame |
| T236 | Lower vulcanizer support arm |
| T237 | Upper vulcanizer support arm |
| T238 | Vulcanizer swivel assembly |

Specifications

| | | |
|------------------|------------|--------|
| Shipping weight | 75 lb. | 34 kg. |
| Shipping volume: | 3.5 cu ft. | |



Shown with Model MT

VULCANIZER PLATES

Tread Area Truck Plates



T080 (49)



T082 (58A)



T085 (59)



T130 (TPI)



T131 (TPO)

T080 (49) 4" Outside Tread Curing Plate

T082 (58A) 5" Inside Flat Radius Curing Plate

T085 (59) 5" Outside Tread Curing Plate

T130 (TPI) Inside Tread Plate for all Tires

T131 (TPO) Outside Tread Plate for all Tires

Shoulder Area Truck Plates



T078 (45)



T081 (55)



T132 (255SH)



T133 (285SH)



T134 (SHO)

T078 (45) 4" Outside Shoulder Curing Plate

T081 (55) 5" Outside Shoulder Curing Plate

T132 (255SH) Inside Shoulder Plate for 255 Low Profile

T133 (285SH) Inside Shoulder Plate for 285 Low Profile

T134 (SHO) Outside Shoulder Curing Plate for all Tires

Tractor Contour Plates



T088(L1)



T090 (R1)

T088 (L1) 4" x 5-1/4" Left Outside Tractor Plate

T090 (R1) 4" x 5-1/4" Right Outside Tractor Plate

Sidewall Area Truck Plates



T079 (48)



T083 (58)



T084 (58S)



T086(68)



T087 (68S)



T093 (AS3-CP)



T135 (255SW)



T136 (285SW)

T079 (48) 4" Inside Contour Plate

T083 (58) 5" Inside Medium Radius Curing Plate

T084 (58S) 5" Inside Sharp Radius Curing Plate

T086 (68) 6" Inside Sidewall/Shoulder Plate for 11R

T087 (68S) 6" Inside Sidewall/Shoulder Plate for Bias

T093 (AS3-CP) 4" Cushioned Inside Plate

T135 (255SW) Inside Sidewall Plate for 255 Low Profile

T136 (285SW) Inside Sidewall Plate for 285 Low Profile

Contour Bags



T094 (P1)



T095 (B2)



T096 (B3)

T094 (P1) 4-1/2" x 6-1/8" Flat Adapter Plate for B2 Bag

T095 (B2) 4-1/2" x 6" Pliable Contour Bag Short Strap

T096 (B3) 4-1/2" x 6" Pliable Contour Bag Long Strap

CONTOUR PLATE PACKAGES

ITEM #T149

MODEL 300 CONTOUR PLATE PACKAGE

| | | |
|-------------|----------|---|
| T078 | Model 45 | 4" Outside Shoulder Curing Plate |
| T079 | Model 48 | 4" Inside Contour Plate |
| T080 | Model 49 | 4" Outside Tread Curing Plate |
| Shipping Wt | 2 lbs | Plate Package sold Separately or Individual Plates. |



ITEM # T150

MODEL 400 CONTOUR PLATE PACKAGE

| | | |
|-------------|-----------|--|
| T078 | Model 45 | 4" Shoulder Curing Contour Plate |
| T079 | Model 48 | 4" Inside Contour Plate |
| T080 | Model 49 | 4" Outside Tread Curing Plate |
| T081 | Model 55 | 5" Outside Shoulder Curing Plate |
| T082 | Model 58A | 5" Inside Flat Radius Curing Plate |
| T083 | Model 58 | Inside Medium Radius Curing Plate |
| T084 | Model 58S | 5" Inside Sharp Radius Curing Plate |
| T085 | Model 59 | 5" Outside Tread Curing Plate |
| Shipping Wt | 8 lbs | Plate Package sold Separately or Individual Plates |



ITEM # T151

MODEL 500 CONTOUR PLATE PACKAGE

| | | |
|-------------|-----------|--|
| T078 | Model 45 | 4" Shoulder Curing Contour Plate |
| T079 | Model 48 | 4" Inside Contour Plate |
| T080 | Model 49 | 4" Outside Tread Curing Plate |
| T081 | Model 55 | 5" Outside Shoulder Curing Plate |
| T082 | Model 58A | 5" Inside Flat Radius Curing Plate |
| T083 | Model 58 | 5" Inside Medium Radius Curing Plate |
| T085 | Model 59 | 5" Outside Tread Curing Plate |
| T088 | Model L1 | 4" x 5-1/4" Left Outside Tractor Plate |
| T090 | Model R1 | 4" x 5-1/4" Right Outside Tractor Plate |
| T094 | Model P1 | 4-1/2" x 6-1/8" Flat Adapter Plate for B2 Bag |
| T095 | Model B2 | 4-1/2 x 6" Pliable Contour Bag Short Strap |
| Shipping Wt | 11 lbs | Plate Package sold Separately or Individual Plates |



ITEM #152

MODEL 1000 CONTOUR PLATE PACKAGE

| | | |
|------|-----------|--|
| T078 | Model 45 | 4" Outside Shoulder Curing Plate |
| T079 | Model 48 | 4" Inside Contour Plate |
| T080 | Model 49 | 4" Outside Tread Curing Plate |
| T081 | Model 55 | 5" Shoulder Contour Plate |
| T082 | Model 58A | 5" Inside Contour Plate Flat Radius |
| T083 | Model 58 | 5" Inside Contour Plate Normal Radius |
| T084 | Model 58S | 5" Outside Contour Plate Sharp Radius |
| T085 | Model 59 | 5" Outside Contour Plate Sharp Radius |
| T088 | Model L1 | 4" x 5-1/4" Left Outside Tractor Plate |
| T090 | Model R1 | 4" x 5-1/4" Right Inside Tractor Plate |
| T094 | Model P1 | 4-3/8" x 6-3/8" Flat Adapter Plate (2 Required for T095 B-2 Bag) |
| T095 | Model B2 | 5" x 7" Pliable Contour Bag (For use with P1 Plate 2 required) |

Shipping Wt 13 lbs Plate Package sold Separately or Individual



ITEM # T153

MODEL LT CONTOUR PLATE PACKAGE

| | | |
|------|--------------|----------------------------------|
| T078 | Model 45 | 4" Shoulder Curing Contour Plate |
| T079 | Model 48 | 4" Inside Contour Plate |
| T080 | Model 49 | 4" Outside Tread Curing Plate |
| T093 | Model AS3-CP | 4" Cushioned Inside Plate |

Shipping Wt 4 lbs Plate Package sold Separately or Individual



ITEM # T154

MODEL 1400 CONTOUR PLATE PACKAGE

| | | |
|------|-----------|---|
| T078 | Model 45 | 4" Shoulder Curing Contour Plate |
| T079 | Model 48 | 4" Inside Contour Plate |
| T080 | Model 49 | 4" Outside Tread Curing Plate |
| T081 | Model 55 | 5" Outside Shoulder Curing Plate |
| T082 | Model 58A | 5" Inside Flat Radius Curing Plate |
| T083 | Model 58 | Inside Medium Radius Curing Plate |
| T084 | Model 58S | 5" Inside Sharp Radius Curing Plate |
| T085 | Model 59 | 5" Outside Tread Curing Plate |
| T088 | Model L1 | 4" x 5-1/4" Left Outside Tractor Plate |
| T094 | Model P1 | 4-3/8 x 6-3/8 Flat Adapter Plate (For use with T095 B2 Contour Bag) |
| T095 | Model B2 | 5" x 7" Pliable Contour Bag (For use with P1 Adapter Plate) |

Shipping Wt 14 lbs Plate Package sold Separately or Individual Plates



ITEM # T155

MODEL MT CONTOUR PLATE PACKAGE

| | | |
|--------------------|-----------|--|
| T130 | Model TPI | Inside Tread Plate for all Tires |
| T131 | Model TPO | Outside Tread Plate for all Tires |
| T134 | Model SHO | Outside Shoulder Plate for all Tires |
| T086 | Model 68 | 6" Inside Sidewall/Shoulder Plate for 11R |
| T087 | Model 68S | 6" Inside Sidewall/Shoulder Plate for Bias |
| Shipping Wt 16 lbs | | Plate Package sold Separately or Individual Plates |



ITEM # T156

MODEL 2000 CONTOUR PLATE PACKAGE

| | | |
|--------------------|-------------|--|
| T130 | Model TPI | Inside Tread Plate for all Tires |
| T131 | Model TPO | Outside Tread Plate for all Tires |
| T132 | Model 255SH | Inside Shoulder Plate for 255 Low Profile |
| T133 | Model 285SH | Inside Shoulder Plate for 285 Low Profile |
| T134 | Model SHO | Outside Shoulder Plate for all Tires |
| T086 | Model 68 | 6" Inside Sidewall/Shoulder Plate for 11R |
| T087 | Model 68S | 6" Inside Sidewall/Shoulder Plate for Bias |
| T135 | Model 255SW | Inside Sidewall Plate for 255 Low Profile |
| T136 | Model 285SW | Inside Sidewall Plate for 285 Low Profile |
| Shipping Wt 30lbs. | | Plate Package sold Separately or Individual Plates |



Our goal is to be the leader in Vulcanizing Equipment worldwide through customer satisfaction, quality and the production of efficient dependable Tire Repair Equipment. The Lincoln Spotters & Vulcanizers have been tested for over 30 years and have the worldwide reputation of being the best.

CONTOUR PLATES AND ACCESSORIES

Contour plates are necessary to adapt the flat surface of the heat units (3-5/16 & 4" diameter) to a contoured, curved surface that matches the tire contour more closely. L.M.C. offers contour plates in both 4" and 5" round for passenger and truck tires. The tractor plates are 4" x 5-1/4" rectangular to fit tread and shoulder areas on tractor tires. For hard to reach spots (between lugs) we recommend the P1 (T094) plate with attached B2 (T095) contour bag. B3 (T096) contour bag is for use only on GT2B (T013) Vulcanizer.

| PLATE PACKAGE | | | 300 | 400 | 500 | 1000 | 1400 | 2000 | LT | MT |
|--|--------|---|-----|-----|-----|------|------|------|----|----|
| PART No | MODEL | DESCRIPTION | | | | | | | | |
| A. Tread Area Truck Contour Plates | | | | | | | | | | |
| T080 | 49 | 4" Outside Tread Curing Plate | 1 | 1 | 1 | 1 | 1 | | 1 | |
| T082 | 58A | 5" Inside Flat Radius Curing Plate | | 1 | 1 | 1 | 1 | | | |
| T085 | 59 | 5" Outside Tread Curing Plate | | 1 | 1 | 1 | 1 | | | |
| T130 | TPI | Inside Tread Plate for all Tires | | | | | | 1 | | 1 |
| T131 | TPO | Outside Tread Plate for all Tires | | | | | | 1 | | 1 |
| B. Shoulder Area Truck Contour Plates | | | | | | | | | | |
| T078 | 45 | 4" Outside Shoulder Curing Plate | 1 | 1 | 1 | 1 | 1 | | 1 | |
| T081 | 55 | 5" Outside Shoulder Curing Plate | | 1 | 1 | 1 | 1 | | | |
| T132 | 255SH | Inside Shoulder Plate for 255 Low Profile | | | | | | 1 | | |
| T133 | 285SH | Inside Shoulder Plate for 285 Low Profile | | | | | | 1 | | |
| T134 | SHO | Outside Shoulder Plate for all Tires | | | | | | 1 | | 1 |
| C. Sidewall Area Truck Contour Plate | | | | | | | | | | |
| T079 | 48 | 4" Inside Contour Plate | 1 | 1 | 1 | 1 | 1 | | 1 | |
| T083 | 58 | 5" Inside Medium Radius Curing Plate | | 1 | 1 | 1 | 1 | | | |
| T084 | 58S | 5" Inside Sharp Radius Curing Plate | | 1 | | 1 | 1 | | | |
| T086 | 68 | 6" Inside Sidewall/Shoulder Plate for 11R | | | | | | 1 | | 1 |
| T087 | 68S | 6" Inside Sidewall/Shoulder Plate for Bias | | | | | | 1 | | 1 |
| T093 | AS3-CP | 4" Cushioned Inside Plate | | | | | | | 1 | |
| T135 | 255SW | Inside Sidewall Plate for 255 Low Profile | | | | | | 1 | | |
| T136 | 285SW | Inside Sidewall Plate for 285 Low Profile | | | | | | 1 | | |
| D. Tractor Contour Plates | | | | | | | | | | |
| T088 | L1 | 4" x 5-1/4" Left Outside Tractor Plate | | | 1 | 1 | 1 | | | |
| T090 | R1 | 4" X 5-1/4" Right Outside Tractor Plate | | | 1 | 1 | | | | |
| | | | | | | | | | | |
| | | | | | | | | | | |
| | | | | | | | | | | |
| E. Contour Bags | | | | | | | | | | |
| T094 | P1 | 4-1/2" x 6-1/8" Flat Adapter Plate for B2 Bag | | | 1 | 1 | 1 | | | |
| T095 | B2 | 4-1/2" x 6" Pliable Contour Bag (Short Strap) | | | 1 | 1 | 1 | | | |
| T096 | B3 | 4-1/2" x 6" Pliable Contour Bag (Long Strap) | | | | | | | | |

WARRANTY FOR L.M.C. VULCANIZERS

L.M.C. warrants that at the time of shipment, the Vulcanizer shall be free from defect in material and workmanship.

Warranty Adjustment

The Company shall repair or replace, at its option, any part or parts of the Vulcanizer which have been returned to the Company's factory freight prepaid (per the instructions for making a warranty claim) and provided that the Company's examination disclosed the Vulcanizer to have been defective in material and workmanship. This Limited Warranty shall be limited to and effective for SIX (6) MONTHS from the date of Purchase. A reasonable charge for parts and/or labor will be made on all service work other than that covered by this Limited Warranty, as authorized by Company.

Exclusions From Warranty

The Company's warranty is solely as stated in above does not apply or extend to Vulcanizers which have been damaged or made inoperable as a result in misuse, accidents normal wear and tear, altered Vulcanizers repaired by persons not expressly approved in writing by Company's Operating Instructions. Failure to complete the warranty Registration form per the instructions stated thereon shall cause this warranty to be void.

THE FOREGOING IS IN LIEU OF ALL OTHER WARRANTIES, ORAL OR EXPRESSED OR IMPLIED, INCLUDING ANY WARRANTIES THAT EXTEND BEYOND THE DESCRIPTION OF THE VULCANIZER. THERE ARE NO EXPRESS WARRANTIES OTHER THAN THOSE SET FORTH IN THIS WARRANTY. TO THE EXTENT PERMITTED BY LAW, THERE ARE NO IMPLIED WARRANTIES OF FITNESS FOR A PARTICULAR PURPOSE.

Limitation of Liability

THE WARRANTY ADJUSTMENT PROVISION SET FORTH IN THIS WARRANTY SHALL BE PURCHASER'S EXCLUSIVE REMEDY AND THE EXTENT OF THE COMPANY'S LIABILITY FOR BREACH OF WARRANTY, REPRESENTATIONS, INSTRUCTIONS OF DEFECTS FROM ANY CAUSE IN CONNECTION WITH THE SALE OR USE OF THE VULCANIZER. THE COMPANY SHALL NOT BE LIABLE FOR ANY SPECIAL, INDIRECT, OR CONSEQUENTIAL DAMAGES, OR FOR LOSS, DAMAGE OR EXPENSE, DIRECTLY, OR INDIRECTLY ARISING FROM THE USE OF THE VULCANIZER OR FROM ANY OTHER CAUSE WHEATHER BASED ON WARRANTY (EXPRESS OR IMPLIED). TORT (EXCLUDING COMPANY'S GROSS NEGLIGENCE OR WILLFUL AND WANTON CONDUCT), CONTRACT, OR OTHERWISE, REGARDLESS OF ANY ADVICES OR RECOMMENDATIONS THAT MAY HAVE BEEN RENDERED CONCERNING THE PURCHASE OR USE OF THE VULCANIZER.

L.M.C. VAN'S INC
4446 PECK ROAD
CROSWELL, MI 48422
lmcvans@sbcglobal.net

800-221-4109
810-679-2115
FAX: 810-679-2681
www.lincolnvulcanizers.com

L.M.C. VAN'S INC

COMMITMENT

Our goal is to be the leader in Vulcanizing Equipment worldwide through customer satisfaction, quality and the production of efficient dependable Tire Repair Equipment. The Lincoln Spotters & Vulcanizers have been tested for over 30 years and have the worldwide reputation of being the best. We want to hear from you good or bad to make our business better, for both of us.



Visit us on the web at: lincolnvulcanizers.com