

# F12

**RAISE AND SERVICE  
PASSENGER CARS,  
TRUCKS, AND VANS**

## FOUR HEIGHT CONFIGURATIONS WITH ADJUSTABLE WIDTH OPTIONS

- Extended height models for taller vehicles
- Wider stance makes it easier to service wider truck bodies

## TWO HEAVY-DUTY PUSH HYDRAULIC CYLINDERS

- Durable construction designed to increase lift performance
- Minimizes down-time

## SPRING OPERATED ARM RESTRAINTS

- Keeps lift arms performing at their peak performance.
- Arm restraints disengage at floor level

## DURABLE POWDER COAT PAINT FINISH

- Provides exceptional protection from the wears a shop will see for years

## STANDARD 2-STAGE FRONT AND REAR ARMS



## F12 LIFTS INCLUDE

**LARGE LOW-PROFILE  
PADDED DROP-IN  
ADAPTERS**

**FOUR (4) EACH  
ADAPTER EXTENSIONS**

- 3 1/2"
- 5"



## KEY FEATURES:

- Overhead cable equalization
- Single Point lock release
- Includes adapter storage bracket
- ALI Gold Certified



Model shown:  
**FWD F12N300BK**



## F12\*

### FEATURES & SPECIFICATIONS:

Capacity	12,000 lbs.
Maximum Rise with 5" Adapter Extensions	77 1/2"
Adjustable Overall Height Options	<b>F12N300</b> 13' 10" Standard <b>F12N301</b> 14' 10" Max. Height <b>F12N302</b> 12' 10" <b>F12N303</b> 11' 11"
Overhead Switch Height Options	<b>F12N300</b> 160 1/8" Standard <b>F12N301</b> 172 1/8" Extended <b>F12N302</b> 148 1/8" <b>F12N303</b> 137 1/8"
Width Inside Columns	114 7/8" Standard 120 7/8" Optional
Overall Floor Width	11' 8" or Optional 12' 2"
Drive-Thru Width	102 3/4" or Optional 108 3/4"
Arm Reach (Min. / Max.)	35" / 54"
Minimum Adapter Height	4 3/4"
Voltage / Amps	208-230V / 17 Amps
Motor / Single Phase	2HP

\*4 Lift Models available at 4 Height Options

Lifts available in black only

Specifications subject to change without notice or liability.

### ALI GOLD CERTIFIED

F12 Lift Series meets the highest industry safety and performance standards. Your assurance of certification is the gold ALI/ETL certified label.



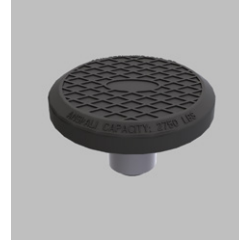
## AVAILABLE ACCESSORIES



### WIDE DROP IN TRUCK ADAPTERS

Wide drop in adapter for lifting 2019 Chevrolet Pick-ups

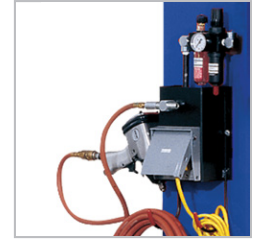
FJ6257KIT



### ROUND RUBBER ADAPTERS

Kit of four rubber adapters, bracket and column hardware

FJ6245YKITM



### AIR / ELECTRIC WORK STATION

Column mounted. Provides access to utilities. Includes two 110v electric outlets and air connection. Filter/regulator/lubricator

FA5911BK



### TIRE ARMS

100 lbs. capacity **Wheel Wing™ Tire Arm** mounts to column lift arms.

- Includes 2 arms, 2 magnetic lug nut dishes, shims
- Folds away

FA5974



### COLUMN-MOUNTED LED TECH LIGHT

**TECH LIGHT™ Line Light 2**

34" light wands with 96 LED lights each.

- Easy positioning with magnetic clips
- 25' of cable and 20W power supply
- 3' spiral cord stretch up to 16' for placement
- Magnetic junction box

FA5701



### HANDHELD LED TECH LIGHT

Rechargeable **TECH LIGHT™**

**Line Light R** inspection hand lamp with top spot light.

- Hook and magnet positioning
- Operates for up to 6 hours
- 4 hour charging time

FA5702



### ROTARY SOLUTIONS

To learn more about all of our automotive service and repair solutions or to contact your local distributor, visit us at [www.RotarySolutions.com](http://www.RotarySolutions.com) today.

### Need assistance or have questions? We're here to help:

800.445.5438 / Sales: [insidesales@rotarysolutions.com](mailto:insidesales@rotarysolutions.com)

Technical Support: [LD-techsupport@rotarysolutions.com](mailto:LD-techsupport@rotarysolutions.com)

### ROTARY SOLUTIONS™

2700 Lanier Drive | Madison, IN 47250, U.S.A.

Lit# [Forward.F12.Cutsheet.06.01.2025](#)

©2025 VEHICLE SERVICE GROUP™

All Rights Reserved. Unless otherwise indicated, ROTARY SOLUTIONS™, VEHICLE SERVICE GROUP™, DOVER® and all other trademarks are property of Dover Corporation and its affiliates.

Product specifications, part numbers, images and component descriptions are subject to change without notice or liability.

